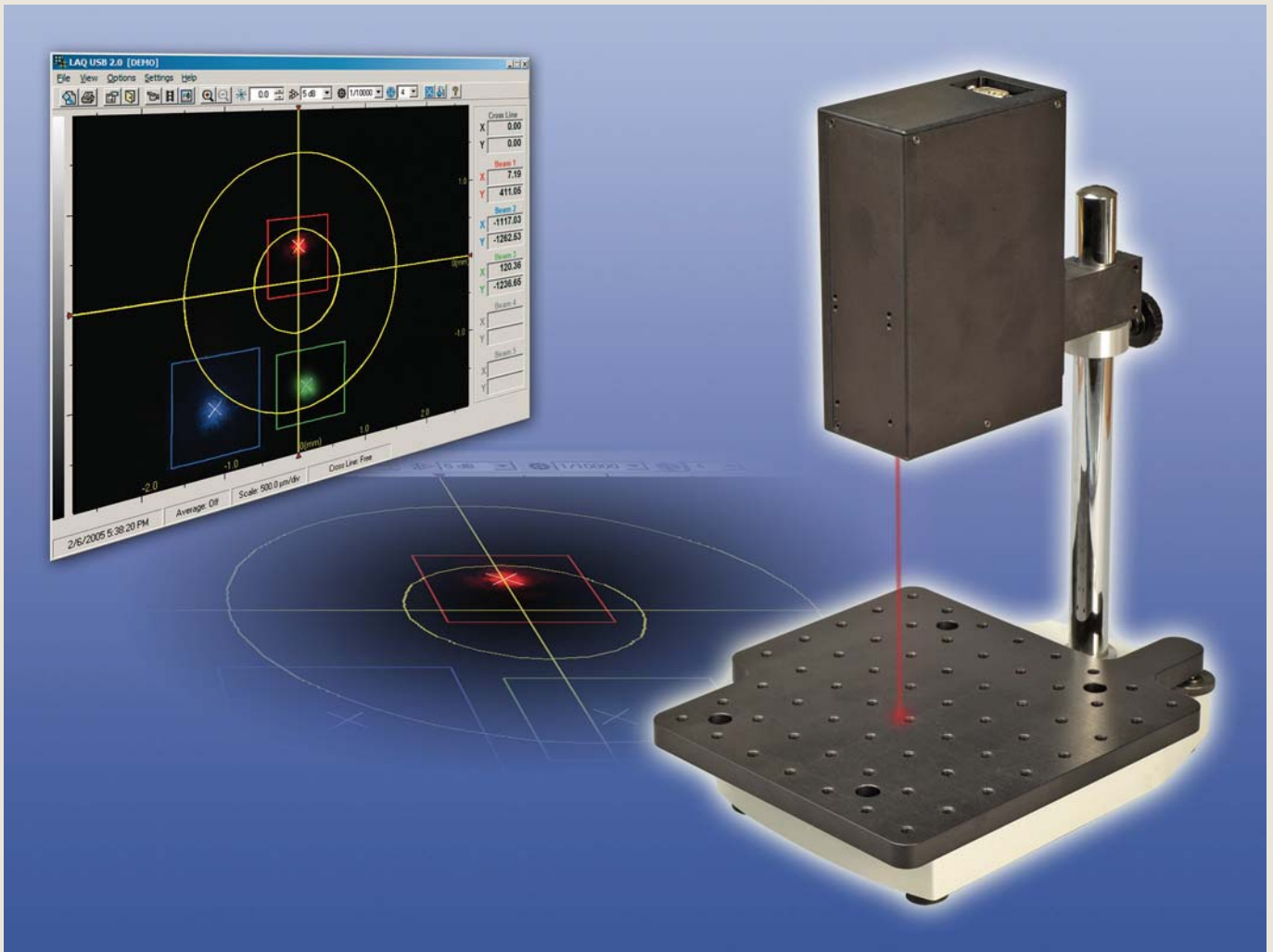


Laser AngleMeter



Novel zooming AngleMeter

A test station for measuring CD/DVD alignment and wobble parameters of the carriage and spindle motor.

- Zooming laser AngleMeter.
- Relative measurements by multiple beams display.
- Measure straightness of movement as well as motor wobble.
- USB 2.0 interface to computer.
- Software with full graphical user interface, allows selecting target reticules and color setting for different beams.

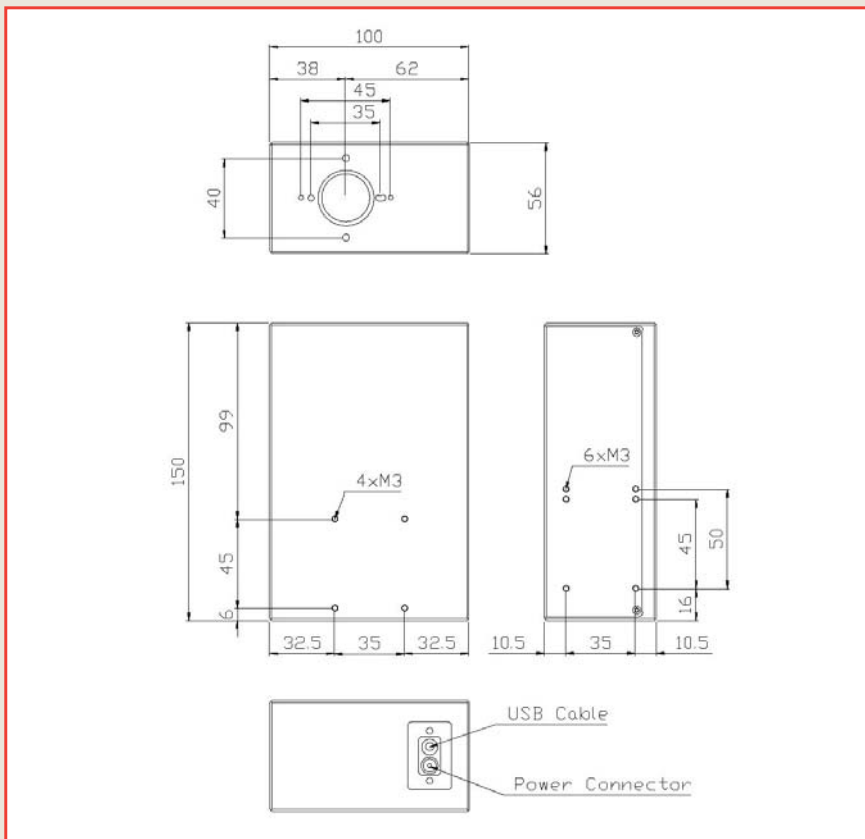
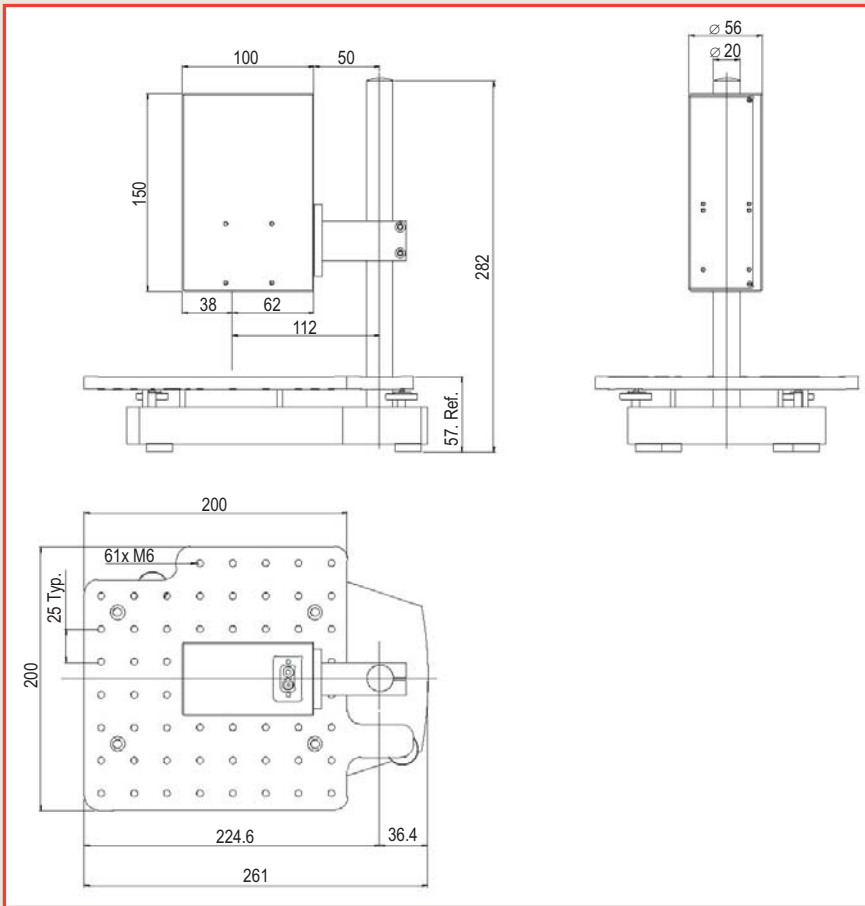


DUMA OPTRONICS LTD.

1st Hazait St., P.O.Box 3370 Nesher 20306, Israel Tel:972-4-8200577 Fax: 972-4-8204190
Website:<http://www.duma.co.il> E-mail:sales@duma.co.il

Mechanical Drawings

Dimensions are in mm.



Computer Requirements

Pentium IV 1GHz, 256 RAM,
10MB Free HDD,
16 bit color VGA card,
resolution 1024X768,
CD ROM any type,
1 free High Speed USB 2.0 port,
OS Windows 2000/XP.

Ordering information

Model: LS-ANGLEM

consisting of:

- A measuring head
with USB2.0 interface,
- An adjusting stand
- Application software on CD



DUMA OPTRONICS LTD.

1st Hazait St., P.O.Box 3370 Nesher 20306, Israel Tel:972-4-8200577 Fax: 972-4-8204190

Website: <http://www.duma.co.il> E-mail: sales@duma.co.il